



## Kiel Life Science Satellite Symposia

### › Evolving health: Novel Perspectives in Genetics & Bioinformatics

TUESDAY 08.06.2016  
›POSTPONED TO FALL 2016‹  
SCIENCE CENTRES (ZMB)

#### › Estonian Genome Center / Kiel Life Science

Organizers

**Tõnu Esko** ESTONIAN GENOME CENTER, UNIVERSITY OF TARTU /  
**Thomas Bosch, Andre Franke and Philip Rosenstiel**  
KIEL LIFE SCIENCE

#### › Confirmed speakers:

ESTONIAN GENOME CENTER, UNIVERSITY OF TARTU  
**Tõnu Esko, Elin Org, Tanel Tenson**  
**Maido Remm, Ursel Soomets, Martin Zobel**

KIEL UNIVERSITY

**Andre Franke, Philip Rosenstiel, David Ellinghaus**  
**Britt Petersen, Femke Heinsen, Georg Hemmrich-**  
**Stanisak, Eva Stukenbrock, Robert Häsler**

Symposium Dinner: Restaurant ›Der Alter Mann‹

#### ORGANIZER

Prof. Dr. Dr. h.c. Thomas C. G. Bosch

#### REGISTRATION DEADLINE

until 30<sup>th</sup> April 2016

Participants of the conference, who are no member of the CRC 1182, Kiel Life Science or the Cluster of Excellence Inflammation at Interfaces, have to pay a conference fee of 150 EUR.

Places are limited, so registration is required for all participants and is binding.

[office@metaorganism-research.com](mailto:office@metaorganism-research.com)

#### CONTACT

Collaborative Research Centre 1182  
›Origin and Function of Metaorganisms‹  
Am Botanischen Garten 1–9  
24118 Kiel  
phone +49 431 880 4169  
fax +49 431 880 4747  
[www.metaorganism-research.com](http://www.metaorganism-research.com)  
[office@metaorganism-research.com](mailto:office@metaorganism-research.com)

#### COORDINATOR

Prof. Dr. Dr. h.c. Thomas C. G. Bosch  
[tbosch@zoologie.uni-kiel.de](mailto:tbosch@zoologie.uni-kiel.de)

#### VICE-COORDINATOR

Prof. Dr. Hinrich Schulenburg  
[hschulenburg@zoologie.uni-kiel.de](mailto:hschulenburg@zoologie.uni-kiel.de)

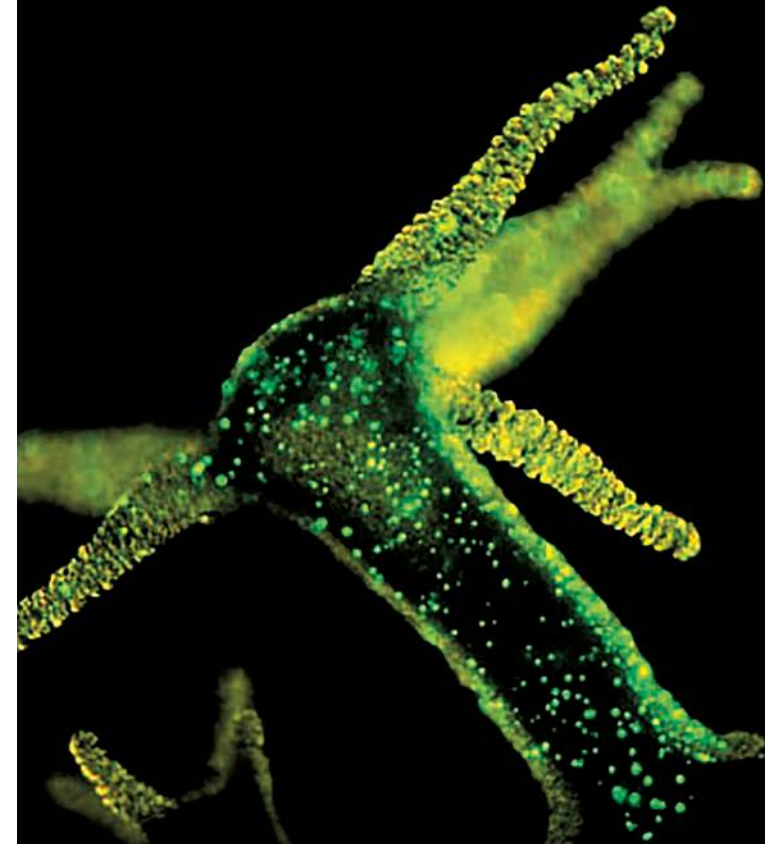
04/2016



## Kiel Life Science International Symposium 2016

### Kickoff Meeting CRC 1182: Origin and Function of Metaorganisms

**JUNE 08-10, 2016**  
**KIEL UNIVERSITY, GERMANY**



---

## WEDNESDAY 08.06.2016

WISSENSCHAFTSZENTRUM KIEL

10:00 – 14:00 **Registration**

14:00 Welcome addresses

**Thomas Bosch** and **Stefan Schreiber**

### › Special Opening Lecture: Pioneers in Holobiont Research

14:30 **Eugene Rosenberg** TEL AVIV UNIVERSITY

**Ilana Zilber-Rosenberg** TEL AVIV UNIVERSITY

Cooperation also drives evolution: Hologenome concept

15:30 **Coffee**

### › On Diseases

(sponsored by Cluster of Excellence: Inflammation at Interfaces)

15:45 **Paul Wilmes** UNIVERSITY OF LUXEMBOURG, ESCH-SUR-ALZETTE  
Systems ecology of human-microbe interactions

16:30 **Joao Xavier** MEMORIAL SLOAN-KETTERING CANCER CENTER,  
NEW YORK  
Unveiling how gut microbiota protect their hosts from  
enteric pathogens

17:15 **Andreas Peschel** UNIVERSITY OF TÜBINGEN  
Ecology of an endogenous pathogen –  
the nasal *Staphylococcus aureus* habitat

18:00 **Transfer to the paddle steamer ›Freya‹**

18:30 – 22:30 **Conference Get-together on board of paddle  
steamer ›Freya‹**

---

## THURSDAY 09.06.2016

WISSENSCHAFTSZENTRUM KIEL

### › Human Metagenomics

09:00 **Stanislav Dusko Ehrlich** INRA, INSTITUT NATIONAL DE LA  
RECHERCHE AGRONOMIQUE, PARIS  
Human gut microbiome in health and disease

09:45 **Philip Rosenstiel** KIEL UNIVERSITY  
Crosstalk of microbes and intestinal epithelial cells

10:05 **John Baines** KIEL UNIVERSITY & MAX PLANCK INSTITUTE  
FOR EVOLUTIONARY BIOLOGY, PLÖN  
Genetic analysis of the skin microbiota and its role in  
susceptibility to autoimmune skin blistering

10:25 **Andre Franke** KIEL UNIVERSITY  
The influence of host genetics in shaping the human  
gut microbiome

10:45 **Coffee**

### › New Developments in Host-Microbe Research

10:30 **Wolfgang Kunze** MCMACMASTER UNIVERSITY, HAMILTON  
Microbiota-gut-brain signalling and the oldest nervous  
system

11:15 **Thomas Bosch** KIEL UNIVERSITY  
Tracing the evolutionary origin of microbe-neuron  
interactions

11:25 **Arne Traulsen** MAX PLANCK INSTITUTE FOR EVOLUTIONARY  
BIOLOGY, PLÖN  
Dissecting a meta-organism with mathematical models

11:45 **Tim Lachnit** KIEL UNIVERSITY  
Viruses and their role in holobiont homeostasis

12:05 **Lunch**

### › Plant – Microbe Interactions

14:00 **Julia Vorholt** ETH ZÜRICH | SPONSORED BY KIEL LIFE SCIENCE  
The leaf microbiota: Systems biology insights and perspectives

14:45 **Eric Kemen** MAX PLANCK INSTITUTE FOR PLANT BREEDING  
RESEARCH, COLOGNE  
Who's who in leaf microbiome dynamics

15:30 **Eva Stukenbrock** KIEL UNIVERSITY  
Domestication-driven evolution and speciation of a fungal  
plant pathogen

15:50 **Coffee**

### › Mechanisms and Model Systems

16:30 **Karen Guillemin** UNIVERSITY OF OREGON, EUGENE  
Modeling our microbial selves: Insights from the zebrafish  
intestine

17:15 **Hinrich Schulenburg** KIEL UNIVERSITY  
*C. elegans* as a novel experimental model for microbiome  
research

17:35 **Sebastian Fraune** KIEL UNIVERSITY  
The interdependency of animal development, environmental  
acclimation and bacterial colonization in the cnidarian model  
organism *Nematostella vectensis*

17:55 **Nicole Dubilier** MAX PLANCK INSTITUTE FOR MARINE  
MICROBIOLOGY, BREMEN  
Why diversity matters: Multiple symbiont strains colonize  
deep-sea *Bathymodiolus* mussels

18:15 **Thomas Roeder** KIEL UNIVERSITY  
How the fly maintains a homeostatic balance in the  
epithelial-microbiota crosstalk

18:35 **Ruth Schmitz-Streit** KIEL UNIVERSITY  
*Aurelia* and *Mnemiopsis* share food, water but not microbiota

19:00 **Transfer of speakers to Hotel Atlantik**

19:30 **Speakers Dinner: Hotel Atlantik ›Weintresor‹**

---

## FRIDAY 10.06. 2016

WISSENSCHAFTSZENTRUM KIEL

### › Endosymbiosis and Genome Evolution

09:00 **John Archibald** DALHOUSIE UNIVERSITY, HALIFAX  
Endosymbiosis and genome mosaicism in microbial  
eukaryotes

09:45 **Angela E. Douglas** CORNELL UNIVERSITY  
Metabolic coevolution and host control of symbiont  
function

10:30 **Coffee**

11:00 **Tal Dagan** KIEL UNIVERSITY  
The contribution of phage-mediated gene transfer to  
microbial genome evolution

11:20 **Ute Hentschel Humeida** GEOMAR, HELMHOLTZ CENTER  
FOR OCEAN RESEARCH KIEL  
Lifestyle evolution in marine sponge symbionts

11:40 **Lunch**

### › Breakthroughs and Opening Perspectives in Host-Microbe Interaction Research

12:30 **Margaret McFall-Ngai** UNIVERSITY OF HAWAII,  
HONOLULU  
Exploring the micro environments that determine  
symbiont specificity in the squid-vibrio association

13:15 **Tobias Rees** MCGILL UNIVERSITY MONTREAL  
An anthropologist's opening up new spaces of thought

13:45 **Rainer Ernst** MUTHESIUS UNIVERSITY, KIEL  
Visible perception of the metaorganism:  
an artist's view

14:15 **Coffee**

14:30 **Roundtable Discussion:**  
Twenty Years of Progress: Perspectives for the  
Collaborative Research Center 1182  
(Chair: Margaret McFall-Ngai and John Archibald)

15:30 **Departure and Party at Restaurant ›Seebär‹ on the  
Baltic Sea**